

Product Overview

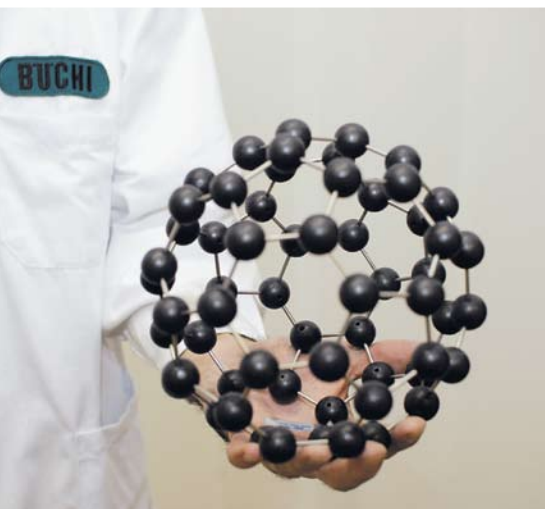


Quality in your hands



Quality

Buchi is one of the world's leading suppliers of key technologies such as evaporation and separation for research laboratories, near-infrared spectroscopy, Kjeldahl and extraction for quality control purposes. Our goal is to sustain a high level of competence in product development, manufacturing and applications related to these technologies. We believe that providing high-quality products and responsive service is the best way of supporting the innovation and effectiveness of our customers.



Solutions

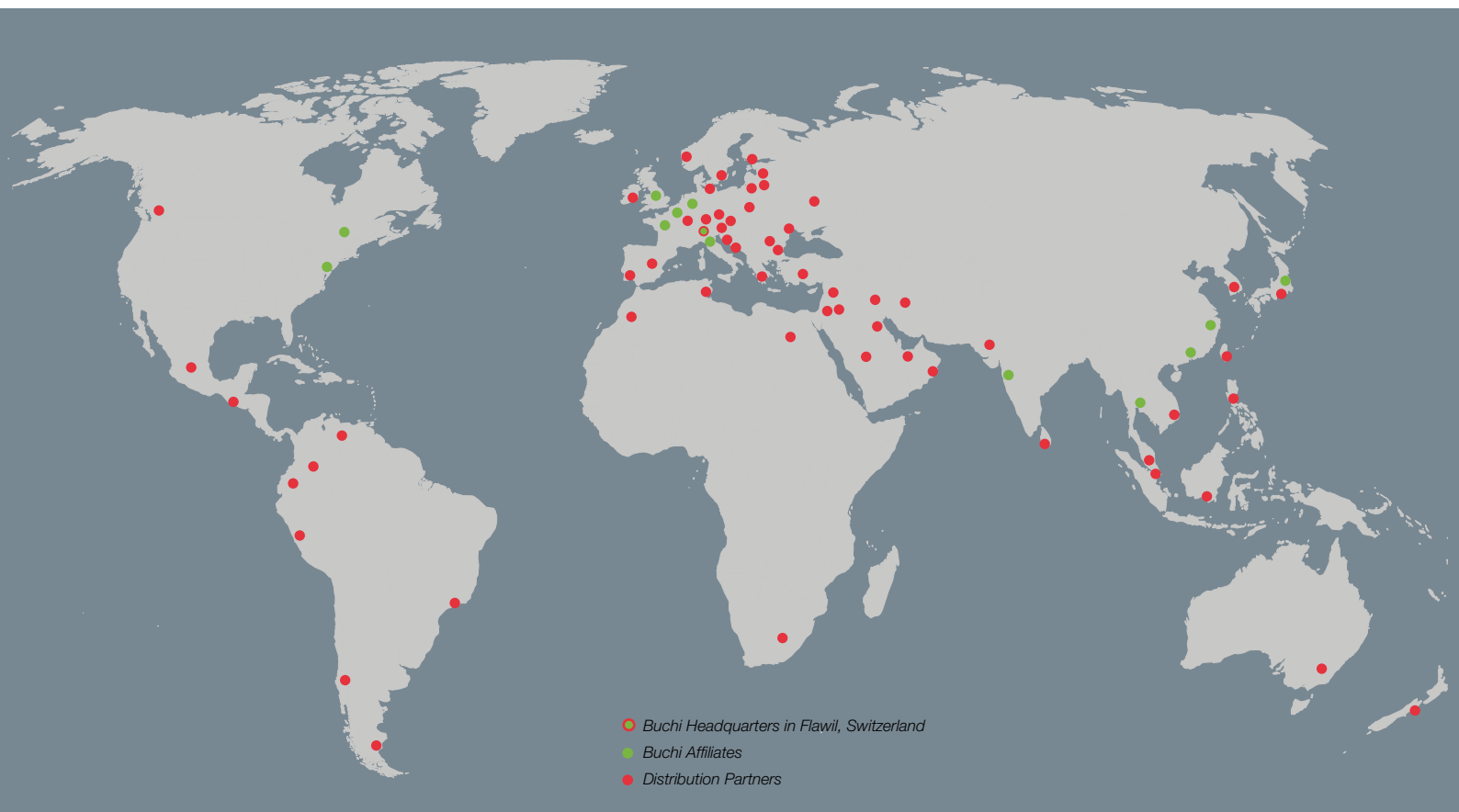
Buchi is not just a manufacturer of individual instruments. We are also a proven solution provider, combining different components to create complex systems for individual applications. Thanks to our profound application know-how, we can develop the optimum configuration to create tailor-made solutions for the most demanding customers.



Customer focus

Our company operates in more than 80 countries with one common purpose: to serve our customers as best we can. Our affiliates and distributors speak your language. Our application and support specialists are on the spot to assist you – wherever you are. We know that the basis for successful cooperation is understanding our customers' needs.

Our worldwide network of qualified distribution partners keeps us close to our customers. Since we are familiar with the requirements of our target markets, we can use our experience and knowledge to provide first-rate solutions.



Affiliates

BÜCHI Labortechnik AG	Switzerland	buchi@buchi.com	www.buchi.com
BÜCHI Labortechnik GmbH	Germany	deutschland@buchi.com	www.buechigmbh.de
BÜCHI Labortechnik GmbH	Netherlands	netherlands@buchi.com	www.buchi.nl
BÜCHI Italia s.r.l.	Italy	italia@buchi.com	www.buchi.it
BUCHI Corporation	USA	us-sales@buchi.com	www.mybuchi.com
BUCHI Canada Ltd.	Canada	canada@buchi.com	www.mybuchi.com
BUCHI UK Ltd.	England	uk@buchi.com	www.buchi.co.uk
Nihon BUCHI K.K.	Japan	nihon@buchi.com	www.nihon-buchi.jp
BUCHI Sarl	France	france@buchi.com	www.buchi.fr
BUCHI (Thailand) Ltd.	Thailand	bacc@buchi.com	www.buchi.com
BUCHI Hong Kong Ltd. BUCHI Shanghai LLC	China	china@buchi.com	www.buchi.com.cn
BUCHI India Private Ltd.	India	india@buchi.com	www.buchi.com

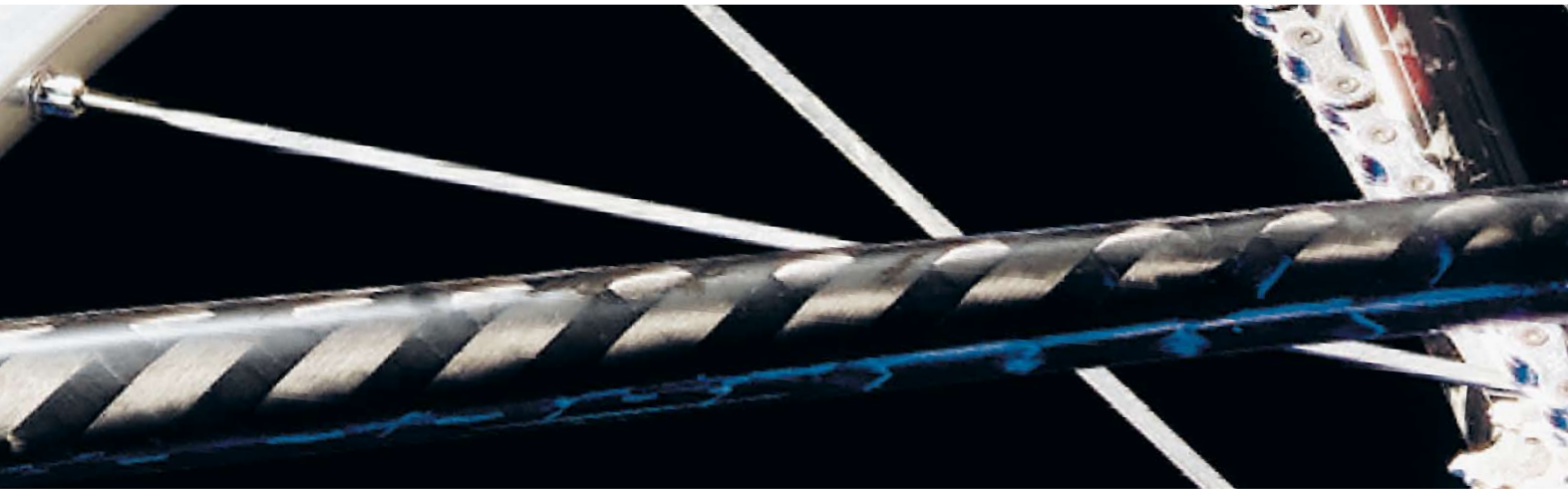
Global Network

Distributors

Argentina	Tec Instrumental S.A.	info@tecinstrumental.com
Australia	In Vitro Technologies Pty Ltd.	info@invitro.com.au
Austria	Büchi Austria	oesterreich@buchi.com
Belgium	Qlab N.V.	info@qlab.be
Brazil	Pensalab	pensalab@pensalab.com.br
Bulgaria	Donau Lab GmbH	office-bg@donaulab.com
Chile	Cientec Instrumentos Cientificos S.A.	cientec@cientecinstrumentos.cl
Colombia	Polco S.A.	polco@une.net.co
Croatia	Donau Lab d.o.o.	office-hr@donaulab.com
Czech Republic	Donau Lab spol. s r.o.	office-cz@donaulab.com
Denmark	Holm & Halby	info@holm-halby.dk
Ecuador	Espectrocrom Cia Ltda.	info@espectrocrom.com.ec
Egypt	Labib Demian Youssef & Co.	etalabib@link.net
Estonia	Est-Doma	tartu@estdoma.ee
Finland	PLD Finland Oy	sales@pld.fi
Greece	Hellamco S.A.	info@hellamco.gr
Guatemala	Precision S.A.	info@precision.com.gt
Hungary	Donau Lab KFT	office-hu@donaulab.com
Indonesia	Abadi Nusa	abtntoday@abadinusa.co.id
Iran	Imaco Ltd.	imaco@imaco.org
Iraq	Sumhar Technologies	info@sumhar.com
Ireland	Mason Technology Ltd.	info@masontec.ie
Israel	Dr. Uri Golik	golik@golik.co.il
Jordan	Sena Establishment for Laboratory Equipment Trading	senalab@batelco.jo
Korea	Sung Jin I&T Co. Ltd.	kcpark@sjint.co.kr
Korea	Hwashin Instrument Co. Ltd.	mail@hwashin.net
Kuwait	TSST	nirmalroy@tsst-kw.com
Latvia	Sia Doma	info@domagroup.lv
Lebanon	Labib Demian & Co. sari	etalabib@link.net
Lithuania	Vil Doma	info@vildoma.lt
Malaysia	Chemopharm SDN. Berhad	sales@chemopharm.com.my
Mexico	Equipar S.A.	equipar@equipar.com.mx
Morocco	Tecnilab	tecnilab@menara.ma

Morocco	Professional LABO	p.labo@menara.ma
New Zealand	Global Science & Technology Ltd.	global@globalscience.co.nz
Norway	Bergman AS	info@bergman.no
Oman	Business International Group LLC	biglrc@omantel.net.com
Pakistan	M/S Continental Worldwide	sales@cwtc.com.pk
Peru	Cimatec S.A.C.	ventas@cimatec.com.pe
Philippines	Dakila Trading Corporation	sales@dakila.com
Poland	Donserv	info@donserv.pl
Portugal	Rotoquimica Lda.	rotoq@rotoquimica.pt
Romania	Donau Lab srl.	office-ro@donaulab.com
Russia	Donau Lab Moscow	office-ru@donaulab.com
Saudi Arabia	Bayouni Trading Ltd.	trd@bayouni.com
Saudi Arabia	Kawther Ibrahim Abdulkadir and Partners Co.Ltd	info@kiaksa.com
Serbia/Montenegro	Donau Lab d. o. o.	office-rs@donaulab.com
Singapore	Chemoscience PTE. Ltd.	enquiry@chemoscience.com.sg
Slovakia	Donau Lab spol. s r.o.	office-sk@donaulab.com
Slovenia	Donau Lab d.o.o.	office-si@donaulab.com
South Africa RSA	Labotec (PTY) Ltd.	sales@labotec.co.za
Spain	Massó Analítica S.A.	sales@masso.com
Sri Lanka	Hemsons International (Pte) Ltd.	hemaslab@st.lk
Sweden	BergmanLabora AB	info@bergmanlabora.se
Syria	Mimosa	mimosa@net.sy
Taiwan	Suntex Instruments Co., Ltd.	suntex@ms1.hinet.net
Tunisia	Science and Technology	satco@planet.tn
Turkey	SEM A.Ş.	info@semilab.com.tr
Turkey	Anamed Analitik VE	sales@anamed.com.tr
Ukraine	Donau Lab Kiev	office-ua@donaulab.com
United Arab Emirates	Business Communications LLC.	bclauh@emirates.net.ae
Venezuela	Cenatec C.A.	sales@cenatec.com
Vietnam	Diethelm & Co. Ltd, Representative Office	luan.quang@tech-diethelmvn.com
Vietnam	Saigon Instrumentation Joint Stock Company	purchasing@sisc.com.vn
Vietnam	Vi Na Chemoscience	sales@chemoscience.com.vn

Evaporation and separation are key steps in many laboratories. For decades, Buchi's rotary evaporators have made it the world leader in laboratory evaporation. Every day our customers know they can rely on equipment that is robust, easy-to-use and of the highest quality. And by constantly innovating all our products and processes, we are able to keep on responding to the needs of laboratories as they change and evolve.



Evaporation Solutions and much more



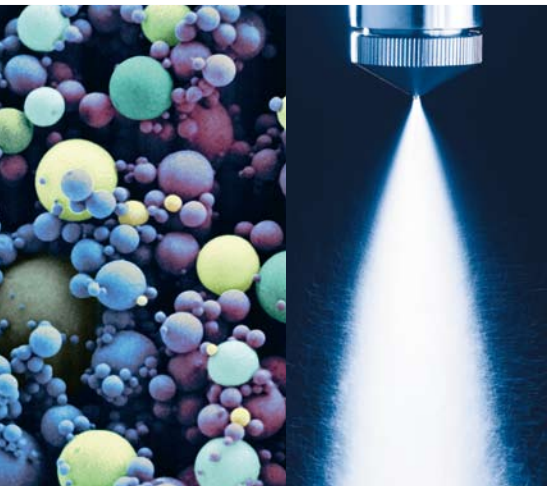
Your challenge is to create new products for the future – we help you meet that challenge

The driving force of innovation is the transformation of visions into reality. Promising ideas only develop into successful products where creativity meets teamwork. We see ourselves as part of our customer's teams, providing products and know-how and developing optimum solutions to enable them to meet their challenges and achieve their goals.



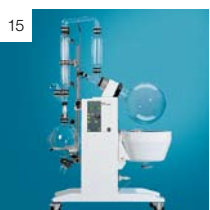
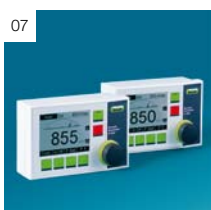
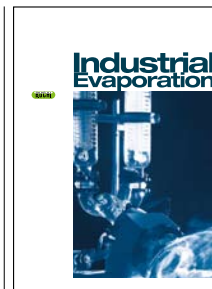
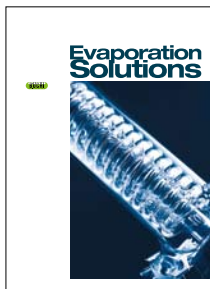
Your workflow encompasses many steps – we offer integrated solutions

Progress comes through a sequence of many different steps. We strive to create solutions that not only fulfill the specific requirements of one single step, but which take the whole workflow into account – solutions that enhance quality and increase the productivity of the laboratory process.



You have to allocate your resources effectively – we make your laboratory more efficient

The need to convert fundamental research into innovative products as quickly as possible means you are always under pressure to increase efficiency and throughput. By constantly innovating our core and complementary products, we can provide our customers with reliable and efficient solutions to reach the most demanding goals.



01 Rotavapor® R-215

Model with additional digital display for vapor temperature and rotation speed. Wide range of seven application-specific glass assemblies to choose from. Upgradeable to a complete solution with Vacuum Controller V-850/V-855, Vacuum Pump V-700/V-710 and Distillation Chiller B-741.

02 Rotavapor® R-210

Laboratory rotary evaporator for evaporation flasks of up to 4 litres. Motorized quick-action jack easily operated by one button. Cordless heating bath for water and oil, with digital display, for a heating range from 20°C to 180°C. Long-life seals enable practically maintenance-free operation. Continuous vapor duct easy to remove and clean, preventing cross-contamination.

03 Rotavapor® R II

The Rotavapor R II focuses on the basic needs for classical laboratory applications in the field of research and training. Manual quick-action jack for an easy operation. Cordless heating bath for water for a temperature range from 20 to 95°C. The Rotavapor R II is available with diagonal, vertical or dry ice condenser.

04 Rotavapor® R-3

The Rotavapor R-3 is a rotary evaporator designed for customers who require a lower-priced system but still want quality. The R-3 has many of the features of our more advanced systems including a digital heating bath (20–95°C), long-life sealing system and vapor duct with Combi-Clip. It utilizes a manual lift for height adjustment.

05 Vacuum Pump V-700

Chemically resistant, oil-free PTFE diaphragm pump with a flow rate of 1.8 m³/h and an ultimate vacuum of <10 mbar. Virtually maintenance-free, with unique window heads for easy visual inspection. Single-stroke speed control for precise vacuum in combination with Vacuum Controller V-850/V-855.

06 Vacuum Pump V-710

Four-head PTFE diaphragm pump with a flow rate of 3.1 m³/h and an ultimate vacuum of below 2 mbar. Economical central vacuum source with a small footprint. Optimally suited for work

with large 20-liter rotary evaporators or for applications with high boiling solvents requiring low vacuums.

07 Vacuum Controller V-850/V-855

Vacuum Controller V-850/V-855 allow speed control of Vacuum Pump V-700/V-710 for a precise, hysteresis-free vacuum and quiet operation. Programmable, with intuitive menu guidance in 6 languages. Integrated solvent database for setting distillation conditions. Optimal process control via timer and LabVac functions. Vacuum Controller V-855 additionally features gradient, repetition and auto-distillation functions.

08 Vacuum Pump V-700 Advanced

Complete vacuum system consisting of Vacuum Pump V-700, Vacuum Controller V-850 and a secondary condenser for maximum recovery of solvents. Thanks to the frequency control of the vacuum pump, no additional in-line valve or valve unit is required.

09 Vacuum Pump V-700 EasyVac

Combined with Vacuum Module V-801 EasyVac, Vacuum Pump V-700 becomes a unique distillation system for the automatic evaporation of individual solvents. EasyVac automatically finds the start point, controls the optimal pressure and finally determines the end of the distillation process.

10 Vacuum Pump V-710 LabVac

Combined with Vacuum Module V-802 LabVac, Vacuum Pump V-710 becomes an efficient and easy-to-use laboratory vacuum system with different vacuum consumers connected. The LabVac module controls Vacuum Pump V-710 in line with the requirements of the user, resulting in minimized pump operation and low emissions.

11 Glass Oven B-585

Small instrument for drying samples, fractionating distillation, sublimation or even freeze-drying in a temperature range from 40°C to 300°C. Excellent sample visibility. Mild drying conditions thanks to radiation and smooth movement of samples by a rotation drive. Large graphical display with 6 selectable languages of operation.

12 Recirculating Chiller Series

Increased distillation efficiency, saving time and costs. Comes in stainless steel housing, and is available with cooling capacities from 500 to 2500 W. Chiller F-100, with a fixed cooling temperature of 10°C and a cooling capacity of 500 W (at 15°C), is ideally suited for use with a Rotavapor.

13 Rotavapor® R-220 SE

The perfect instrument for pharmaceutical and chemical laboratories to distill large amounts of solvents. With a flask size of up to 20 liters combined with 7 different coated glass configurations and a wide range of accessories, it can be used for almost any application. High throughput with a safe, robust and easy-to-operate rotary evaporator.

14 Rotavapor® R-220 EX

The first electrically heated ex-proof rotary evaporator in the world for 20-liter flasks. For safe and convenient operation. It combines ease of operation, functionality and the versatility of seven glass assemblies, and complies with stringent EC directive 94/9 on explosion-proof instruments (ATEX95).

15 Rotavapor® R-250

Single-stage distillation for the pilot plant and production. Flask volumes of 20 and 50 liters. Electric bath rated 6.6 kW for a temperature range from 20°C to 180°C. Parallel condensers enable easy assembly and quick cleaning. Convenient handling even for large volume flasks. Maintenance and glass components are compatible with the R-220.

16 Rotavapor® R-250 EX

An explosion-proof version of the R-250. Electric bath heater up to 150°C and rotation drive with frequency converter ensure simple, precise and reproducible operation. The device meets new EU guideline 94/9 (ATEX). A wide range of accessories is available, including four different glass assemblies to choose from.

NEW

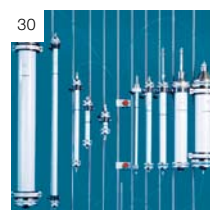
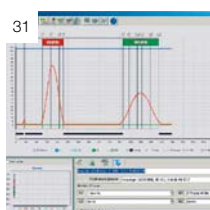
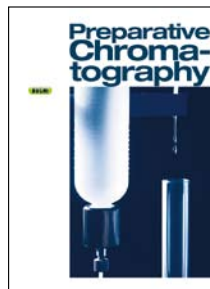
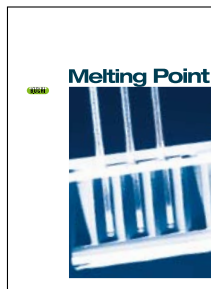
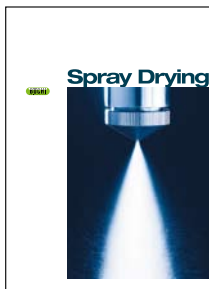
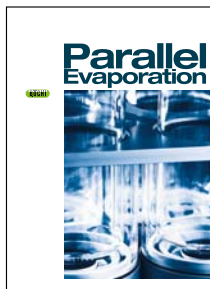
NEW

NEW

NEW

NEW

NEW



17 Multivapor P-6/P-12 stand-alone
Efficient evaporation of 6 or 12 samples at the same time. Adapter set for different sample vessels. Basic version with Multivapor platform, crystal rack and coated type S or C condenser. Extensible to the Multivapor P-6/P-12 Professional with additional re-condenser for the Vacuum Pump V-700 and Vacuum Controller V-855 with the clever EasyVac function.

18 Syncore® Polyvap
For rapid parallel evaporation of different samples including high-boiling solvents. Interchangeable racks for 4 to 96 samples, with sample volumes from 0.5 ml to 500 ml. No cross-contamination thanks to individual connection of the sample glasses to the patented vacuum cover.

19 Syncore® Analyst
Up to twelve samples can be evaporated simultaneously to a defined residual volume. Hybrid heating and cooling principle for safe and fast contraction without supervision. The powerful drive ensures intense vortex motion and avoids bumping. No cross-contamination thanks to individual connection of each sample. An optional solid phase extraction (SPE) module enables the combination of SPE steps and evaporation.

20 Nano Spray Dryer B-90
R&D instrument for the production of small quantities of homogenous powders (100-mg scale) with high yields. Achievable particle sizes 300 nm to 5 micron. Suitable for various applications, including small scale (1–50 ml) spray drying of solutions, nanoemulsions and nanosuspensions. Option to work safely with organic solvents by using the Inert Loop B-295.

NEW

21 Mini Spray Dryer B-290
The quick and easy way to dry solutions, suspensions or emulsions to a powder. 30 ml is enough to perform a spray drying run, with maximum water throughput up to 1 l/h. Temperature range 20 °C to 220 °C. Gentle drying conditions and short residence time make it especially suitable for temperature-sensitive products. Option to work safely with organic solvents by using the Inert Loop B-295 as an accessory.

22 Inert Loop B-295
Spray drying accessory for closed loop circulation under inert conditions to work safely with flammable solvents. Equipped with pressure and oxygen measurement and temperatures control down to –20 °C.

23 Dehumidifier B-296
Versatile instrument for reproducible inlet drying air conditioning and efficient condensation of water in closed loop configuration.

24 Melting Point M-560
Visual melting and boiling point determination. Measuring range from ambient to 400 °C. Guided calibration and easy to use.

NEW

25 Melting Point M-565
Video camera equipped instrument for automatic determination of melting and boiling points. Video replay function with variable speed. Fully guided calibration process. Measuring range from ambient to 400 °C. Software to store data and IQ/OQ are available.

NEW

26 Sample Loader M-569
For quick and efficient loading of samples into Buchi melting point capillaries.

27 Sepacore Gradient Flash System
Convenient system for isocratic or binary gradient separations. Pulsation-free solvent flow enables optimized separation performance. Simple, intuitive settings and programming of binary solvent gradients of 0%–100% for precise separations.

28 Sepacore®
The flexible Preparative Chromatography system for the user. Covered pressure ranges up to either 10 or 40 bar at maximum flow rates of 250 ml/min for purification with flash cartridges or glass columns. Intelligent fraction collector with teaching function for customer-designed racks.

29 Cartridges and Cartridge® C-670
Flash cartridges filled with high-quality 40–63 µm silica gel enable quick and reproducible separations. The Cartridge is the economic, fast and save way to pack high-quality flash cartridges.

30 Glass Columns C-690
The Buchi product range comprises a variety of column types of different forms, sizes and designs for any amount of sample. For applications under high pressure Plastic+Glas covered glass ensure the highest degree of safety.

31 Sepacore Software
Flexible, user-friendly chromatography software package. Supports electronic data collection during separations.

32 Sepacore Automated System
The SepacoreControl package enables intuitive control of the Sepacore system via PC. It is easy to use and offers unsurpassed flexibility. Graphical modification of binary solvent gradients from 0%–100% during the run. Monitoring and control of the chromatography parameters and the fraction collector.

Order brochures at:
www.buchi.com/orders

Solutions for Kjeldahl and extraction



Smart concept for maximum flexibility

In acid digestion, steam distillation and extraction, Buchi provides a broad range of products enabling the selection of different methods. At the same time, the actual instrumentation setup can be matched precisely to the customer's sample throughput and individual workflow.



Application and operational support

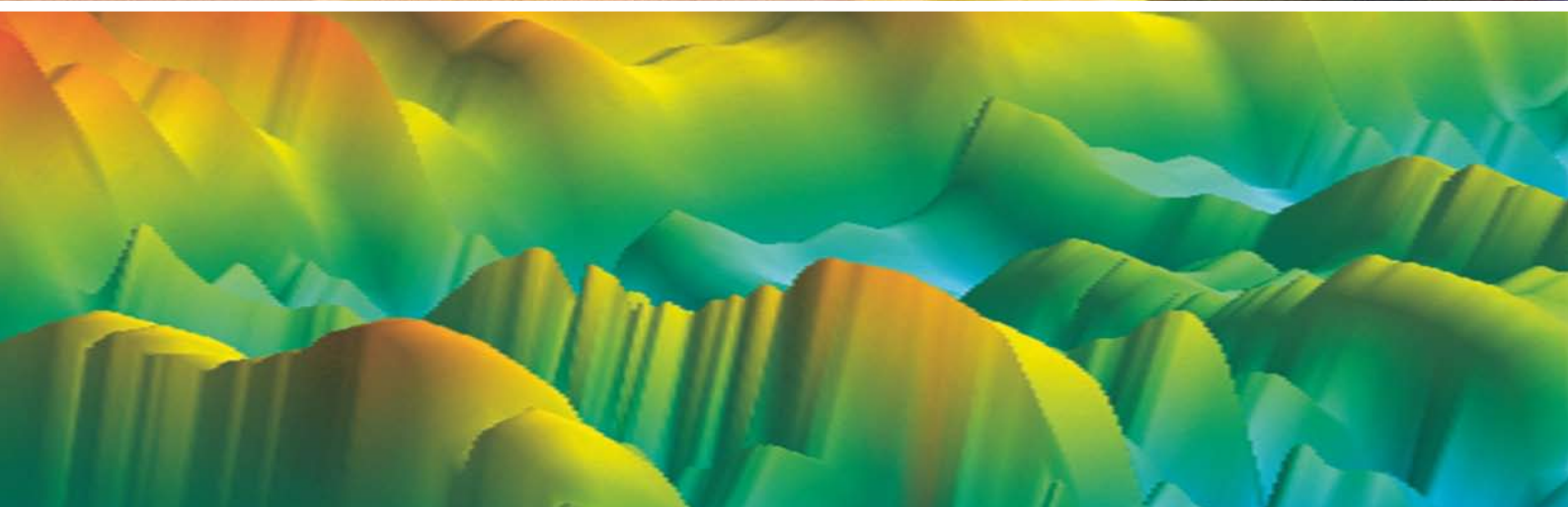
Buchi customers can count on dependable, robust and safe equipment. For Kjeldahl and extraction applications, Buchi has been a reliable partner for decades. Our highly trained support and service specialists and detailed technical documentation ensure that chemists receive the support they need wherever they are – offering customers true solutions to their analytical needs.



Accessories for specific applications

Buchi instruments are designed to work in accordance with methods such as AOAC, EPA, ISO, and DIN. Dedicated equipment, e.g. for TKN digestion, plus specific accessories (SO₂, COD, Devarda...) offer tailor-made solutions for a wide variety of applications.

NIRSolutions are integral products that have been thought through down to the last detail. All Buchi solutions combine state-of-the-art instruments with reliable software and outstanding application and calibration support as well as technical service. They are maintained by excellently trained staff and distributors.

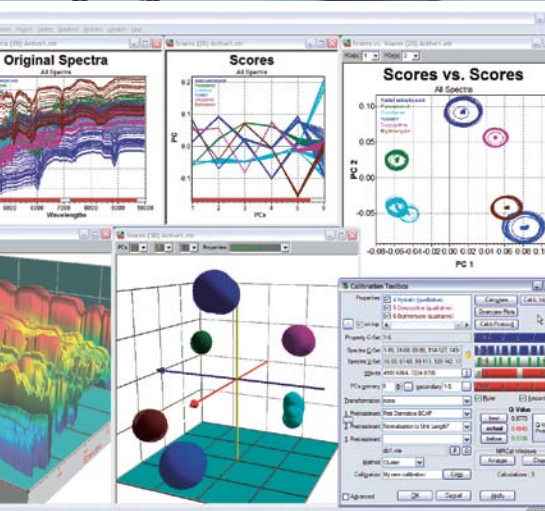


NIR Solutions: an integral Concept



Flexible or dedicated FT-NIR Solutions

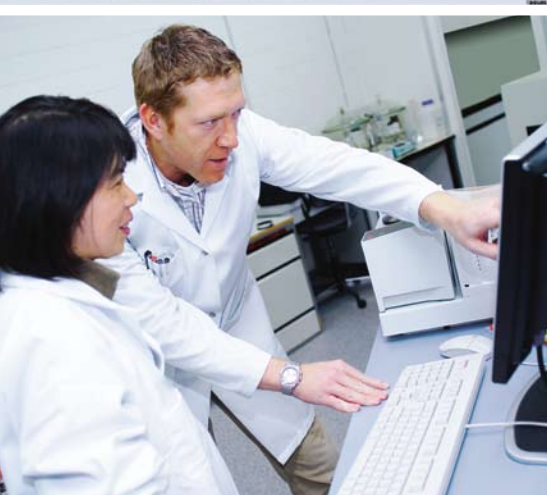
The unique NIRFlex N-500 FT-NIR-spectrometer and the new stand alone NIRMasteR represent the systematic optimization of the robust, proven Buchi FT-NIR technology. Based on the legendary polarization interferometer both the NIRFlex N-500 with its multiple sampling options and the NIRMasteR with its IP housing and the embedded PC fulfill the NIR requirements from laboratory to production. Pharmaceutical and chemical as well as food and feed industries will find that Buchi NIR spectrometers are the right answer to all their applications offering optimum solutions in proven Buchi quality.



NIRWare and NIRCal Software Solutions

The modular concept and database architecture of Buchi's NIR software products are the key factors in meeting the requirements of our customers – ranging from the intuitive NIRWare Operator for daily routine use to full compliance with regulatory requirements such as FDA 21 CFR Part 11 for the pharmaceutical industry. Use the recognized NIRCal Chemometric Software with its unique Calibration Wizard just once, and you will never want to be without it again.

The NIRWare LIMS Interface and the global network solution NIRAnywhere are tools to enhance the usability and improve the efficiency of data handling and quality assurance.



Specialized Services and Solutions

Buchi's global pre-calibrations and spectral libraries are only one aspect of Buchi's NIR Solutions. To get the best results, we combine our calibration know-how with established partners like Aunir®, Fluka® or Mallinckrodt Baker®.

Our highest priority is to maintain solid and long-lasting customer relationships. For this reason our affiliates, global competence centers, and distribution partners all over the world are an integral part of our after-sales support service and are at your disposal at any time.

Analytical labs throughout the world rely on Buchi laboratory equipment. Particularly in food, feed and environmental applications, customers depend on integrated workflow packages. Kjeldahl and Extraction solutions from Buchi reflect these needs, combining a comprehensive range of products with solid application support.





33



34



35

NEW



41



42



43



36

NEW



37



38



44



45

NEW



39



40



46



47

33 + 34 Digest System K-437 and Digest Automat K-438/K-432

Block digester for parallel digestions of up to 12 samples in 500-ml tubes (e.g. TKN) or 20 samples in 300-ml tubes. Offering high-performance heating, continuously adjustable between 100 and 450 °C. An integrated control system allows time-and-temperature-controlled digestion processes. In addition to this the Digest Automat K-438 and K-432 [34] allow fully automated unattended operation thanks to the integrated lift.

35 SpeedDigester K-425/K-436

Digestion of up to 6 or 12 samples, with continuously adjustable IR-heating. Highly efficient preheating within 10 minutes decreases digestion time substantially. The SpeedDigester accepts 300-ml as well as 500-ml sample tubes. A tight exhaust system avoids any emission.

NEW

36 SpeedDigester K-439

The first IR digester with precise temperature control which allows for easy and automated Kjeldahl digestions of up to 12 samples. Continuously adjustable temperature from 50 to 580 °C. Programming of up to 50 methods with the most commonly used predefined. The SpeedDigester accepts 300-ml as well as 500-ml sample tubes.

NEW

37 Scrubber B-414

Compact gas scrubbing system for the efficient exhaust, neutralization and adsorption of acid/alkaline fumes, aggressive gases and bad odors arising during Kjeldahl digestion or other processes. Featuring a multi-step function principle using a powerful pump. The two-step basic system is modularly extendable to three more sophisticated configurations. Guarantees maximum safety in the laboratory.

38 + 39 Distillation Unit K-350, K-355 and KjelFlex K-360

Compact manual (K-350 and K-355 [38]) and semi-automatic (K-360 [39]) distillation units for quick, safe and reproducible steam distillation. Easy-to-use systems which can be used for classical nitrogen and protein determination such as Kjeldahl, TKN (Total Kjeldahl Nitrogen) and Devarda, in accordance with official methods (AOAC, EPA, ISO, DIN). The manual K-355

and the semi-automatic K-360 are equipped with an acid-resistant pump, which expands the range of applications such as alcohol, sulphur dioxide, volatile acids or phenol determination. The KjelFlex K-360 allows storage of up to 50 programs and 500 results. Expandable to a fully automated analysis system with an external titration unit. Combining flexibility, high ease of use and maximum safety.

40 Kjeldahl Sampler System K-370/K-371

The K-370 is an automated distillation and titration unit for high sample throughput and convenient analysis. Its main features are color display, state-of-the-art multitasking software and the option to fully automate sample analysis by connecting the Autosampler K-371. The sample changing mechanism using steam is unique. The system fits on any lab bench due to its small footprint.

41 Hydrolysis Unit B-411/E-416

Hydrolysis system for classical total fat determination according to Weibull-Stoldt. Manual working steps are minimized efficiently. Parallel hydrolysis and integrated filtration of up to six samples. User-friendly operation. Integrated vacuum system minimizes emission of odors and corrosive gases.

42 Extraction System B-811/E-816 LSV

Solid-liquid extraction system for a broad range of applications. Electronic monitoring of extraction, rinsing and drying ensures reproducible conditions and reliable results. Suitable for solvents with a boiling point of up to 150 °C. The system offers operation in 4 different modes without rebuilding, including the Soxhlet method as well as hot extraction. All parts coming in contact with the solvent and sample are inert, which allows for environmental applications. In the LSV model, main glass parts are expanded by ~ 60%.

43 + 44 Extraction Units E-812 SOX/E-816 SOX/HE

The Extraction Units E-812/E-816 SOX [43] perform a solid-liquid extraction to determine total fat in foodstuff and animal feed. Since these units represent an original Soxhlet principle as an unique feature, they comply with standardized methods (AOAC: Acid Hydrolysis Method; §64 LFBG: Weibull Stoldt) for total fat determination. The hot extraction

model [44, HE] runs an automated hot extraction according to Randall or Goldfish and the EN Commission Directive 98/64/EC for feed samples analyzing crude fat or total fat. Two models are available: a 2-place and a 6-place unit. The units guarantee fully automated and accelerated extraction. Cycle and/or time monitoring allows for unattended operation and best reproducibility (RSD <1%). Thanks to the implemented solvent library, no time-consuming method development is necessary. The Hydrolysis Units E-416 and B-411 as ideal complements to the Extractions Units E-812/E-816 ensure safe and fast acid digestion prior to extraction.

45 SpeedExtractor E-916/E-914

SpeedExtractor's parallel design takes pressurized solvent to a new dimension: An incoming batch of six samples is processed simultaneously in 20–40 min. Thus, analysis results are available within a few hours. It also allows for a previously unheard-of level of efficiency and throughput, yielding up to 96 samples in eight hours. In addition, the automatic sealing system reduces manual handling procedures to a minimum.

NEW

46 Mixer B-400

Reliable analysis results depend on optimum sample preparation. This patented mixing system crushes and homogenizes samples within seconds. High functionality, simple operation and maximum safety are the main features. Available in an inert configuration for elemental trace analysis.

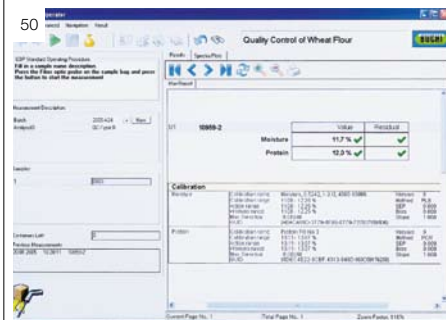
47 Wet Digester B-440

Device for non-polluting preincineration, sulphated ash determination or evaporation of volatile acids and bases in ceramic crucibles at temperatures of up to 550 °C. Parallel treatment of up to 6 samples.

48



50



49



51



52



53

NEW



NEW

48 NIRFlex® N-500

The Buchi NIRFlex N-500 is a FT-NIR spectrometer for rapid sample measurements. Typical applications include the identification of powders, liquids, and pastes, as well as the quantitative determination of constituents in pharmaceutical and food and feed industries. Its hot-swappable sampling options make it to a dedicated analyser for specific sample types and applications. Simple application methodology and minimal sample preparation make the NIRFlex N-500 the ideal tool for the control of incoming raw materials and production quality control.

49 NIRCal® Chemometric Software

NIRCal wizards and automatic routines will help you simplify the complex operations of chemometric evaluation, enabling you to optimise the information held in your data. The comprehensive Calibration Wizard assists the user in developing robust calibrations without extensive chemometric knowledge.

50 NIRWare® Software Suite

NIRWare is an entirely new generation of software. It has been designed to meet all the needs of our customers. The software is modular and flexible in design. NIRWare uses a database-oriented software architecture which includes a purpose-designed life cycle model, an integrated user management feature and integrated security settings for all software components.

Integrate your NIR data into your world using the NIRWare LIMS Interface or our global network solution NIRAnywhere. The bi-directional NIRWare LIMS Interface allows flexible and secure data exchange with full traceability of measured results.

NIRAnywhere allows remote data management of several Buchi spectrometers via global networks. Keep an eye on your process performance at any time, secure your data collected, and work centrally with a team of qualified calibration specialists.

NIRCal and NIRWare comply with the regulatory regulations of the pharmaceutical industry.

51 NIR Online

Go online with Buchi NIR technology. Monitoring and controlling production processes increases the quality of your products in real time. Check your quality online!

52 NIRFlex® Solids Transmittance

NIRFlex Solids Transmittance is optimized to perform transmission measurements of solid dosage forms, like tablets or capsules, in a very simple and convenient way.

53 NIRMasteR

The first stand alone FT-NIR-spectrometer with hygienic Easy-Clean design, the Buchi NIRMasteR is fully at-line compatible in the production environment of food and feed industries.

The Buchi NIRMasteR is available in two versions: A food certified polymer housing and a stainless steel enclosure, both with high ingress protection (IP54 or higher). With their wide range of pre-calibrations the NIRMasteR is truly plug-and-play, ready for the immediate implementation. The unique robust polarization interferometer assures reliable and accurate results even in harsh environments without frequent, expensive instrument standardizations.

Buchi's NIRCal chemometric software is available to enlarge and adapt calibrations or establish new proprietary calibrations using a patented calibration wizard. Bidirectional calibration transfer between the NIRFlex N-500 lab instrument and the new NIRMasteR is safe and efficient due to the identical interferometer concept.

Operation of the NIRMasteR is possible through an intuitive touch screen interface, which will also show all relevant results in a large character display.

Globally operating NIR networks with multi-site NIRMasteR installations are supported by Buchi's NIRAnywhere software solution, providing safe and fast remote calibration updates and/or data backups over large distances.

Order brochures at:
www.buchi.com/orders

**BÜCHI Labortechnik AG**

CH – 9230 Flawil 1
T +41 71 394 63 63
F +41 71 394 65 65
buchi@buchi.com
www.buchi.com

BUCHI UK Ltd.

GB – Oldham OL9 9QL
T +44 161 633 1000
F +44 161 633 1007
uk@buchi.com
www.buchi.co.uk

BUCHI India Private Ltd.

IND – Mumbai 400 055
T +91 22 667 18983 / 84 / 85
F +91 22 667 18986
india@buchi.com
www.buchi.in

BÜCHI Labortechnik GmbH

D – 45127 Essen
Freecall 0800 414 0 414
T +49 201 747 490
F +49 201 237 082
deutschland@buchi.com
www.buechigmbh.de

BUCHI Hong Kong Ltd.

HK – Central
T +852 2389 2772
F +852 2389 2774
china@buchi.com
www.buchi.com.cn

BUCHI Canada Ltd.

CDN – Thornhill, Ontario L4J 6Z2
T +1 416 277 7407
F +1 905 764 5139
canada@buchi.com
www.mybuchi.com

BÜCHI Labortechnik GmbH

NL – 3342 GT Hendrik-Ido-Ambacht
T +31 78 684 94 29
F +31 78 684 94 30
netherlands@buchi.com
www.buchi.nl

BUCHI Shanghai

RC – 500052 Shanghai
T +86 21 6280 3366
F +86 21 5230 8821
china@buchi.com
www.buchi.com.cn

BUCHI Corporation

USA – New Castle, Delaware 19720
Toll Free: +1 877 692 8244
T +1 302 652 3000
F +1 302 652 8777
us-sales@buchi.com
www.mybuchi.com

BUCHI Sarl

F – 94656 Rungis Cedex
T +33 1 56 70 62 50
F +33 1 46 86 00 31
france@buchi.com
www.buchi.fr

Nihon BUCHI K.K.

J – Tokyo 110-0008
T +81 3 3821 4777
F +81 3 3821 4555
nihon@buchi.com
www.nihon-buchi.jp

BÜCHI Italia s.r.l.

I – 20090 Assago (MI)
T +39 02 824 50 11
F +39 02 57 51 28 55
italia@buchi.com
www.buchi.it

BUCHI (Thailand) Ltd.

T – Bangkok 10600
T +66 2 862 08 51
F +66 2 862 08 54
bacc@buchi.com
www.buchi.com

We are represented by more than 100 distribution partners worldwide. Find your local representative at www.buchi.com

Quality in your hands

